



### SPECIFICATION

- \* Body & end caps quality investment casting
- \* Available in stainless steel or carbon steel
- \* Adjustable stem packing
- \* Blow-out proof stem design
- \* Available in L-port or T-port
- \* Available in full bore or reduced bore (std. bore)
- \* 100% air tested under water at 80-100 psi
- \* Temperature range -20°F to 450°F
- \* End type: thread
- \* with locking device

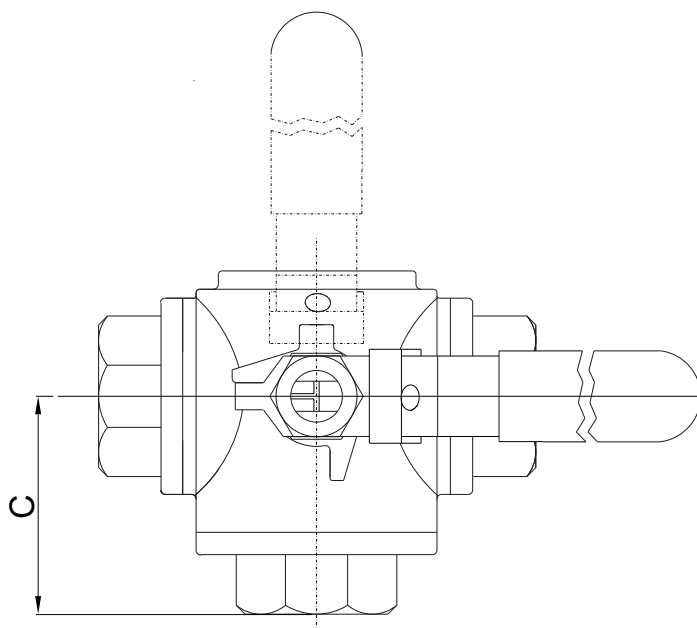
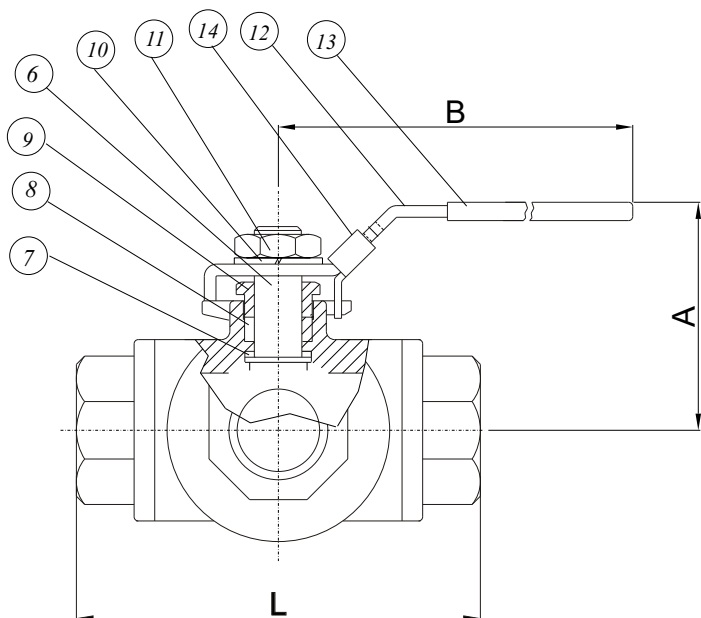
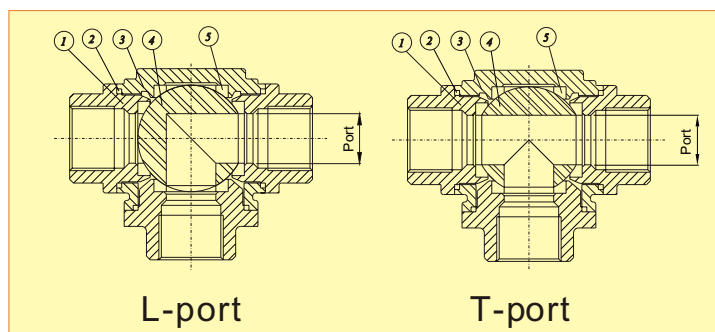
### OPTION

- \* PTFE/ PFA coating (40-70 um)
- \* TFM1600/ TFM4215/ UPE (UHMWP) soft kits

ZIPSON'S 501S, 3-way ball valve manual type is the most popular & ripe type in the product line. 501S is 4 seats design, this will help to keep the ball position stably. And designed with a insert pin between the stem & ball to make sure the ball will not leaning after hundreds of operation.

The 3-way ball valve is a wise way for engineer to furnish & design the pipe lines. 3-way ball valve will help to save the cost on pipe material & working space. Zipson offer both full bore & reduced bore (std. bore) for option.

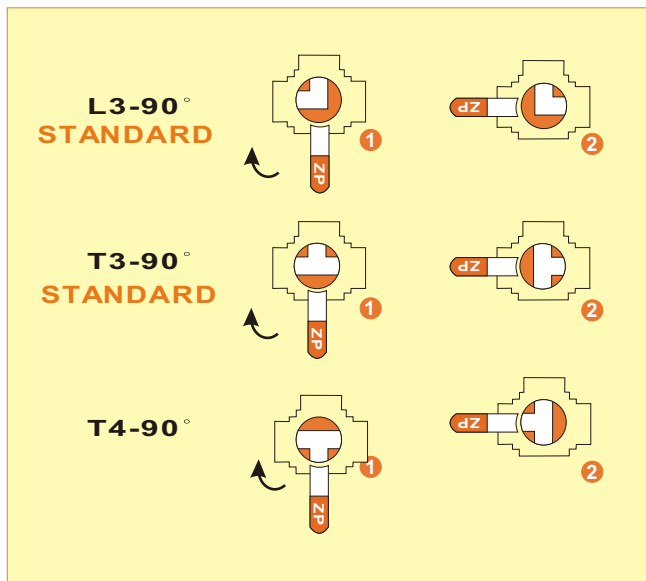
As for the soft kits, pure PTFE/ PTFE+25% Carbon/ TFM1600/ TFM4215/ UPE (UHMWPE) are available for different application.



## DIMENSIONS (mm)

FULL PORT	STD. PORT	A	B	C	L	Port	FULL W(kg)	STD. W(kg)
1/4"	*	52	140	36	72	11	0.54	0.54
3/8"	1/2"	52	140	36	72	12	0.54	0.54
1/2"	3/4"	56	140	41.5	83	15	0.85	0.56
3/4"	1"	70	162	49.5	99	20	1.24	0.84
1"	1 1/4"	76	162	56	112	25	2.08	1.26
1 1/4"	1 1/2"	82	195	62.5	125	32	2.83	2.02
1 1/2"	2"	91	195	74.5	149	38	4.83	2.63
2"	*	122	305	87	174	50	8.55	4.71

## FLOW PATTERN

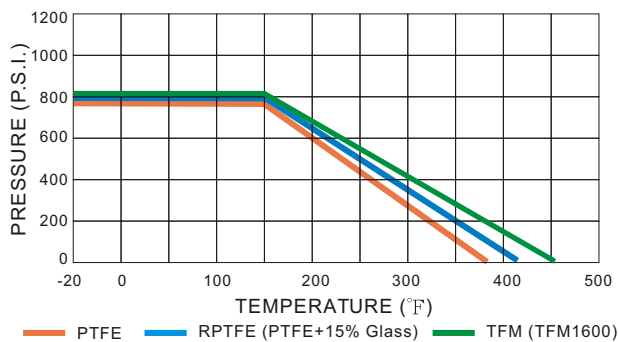


The wise use of 3-way or multi-way ball valve will help to save much cost on pipe line installation & the cost of place.

## MATERIALS LIST

ITEM	PART NAME	MATERIALS
1	END CAP	CF8M
2	GASKET	PTFE
3	BODY	CF8M
4	BALL	SS 316
5	SEAT	PTFE
6	STEM	SS 316
7	THRUST WASHER	RPTFE
8	STEM PACKING	PTFE
9	GLAND	SS 304
10	DISK WASHER	SS 301
11	STEM NUT	SS 304
12	HANDLE	SS 304
13	SLEEVE	PLASTIC
14	LOCKING DEVICE	SS 304

## PRESSURE/ TEMPERATURE



### CAUTION!

1. As dismantle the ball valve, don't forget to replace new Repair Kits, especially the gasket to prevent from leaking.
2. PTFE/TFM is better than RPTFE (+15% Glass) as operate the valve by actuator, for Glass fiber will hurt the ball and cause the torque value increasing.
3. Before welding, make sure the ends were dismantled for welding.
4. For multi-way valve, when the media is AIR and over 30 bar, please ask Zipson to make SS housing to protect the seat.